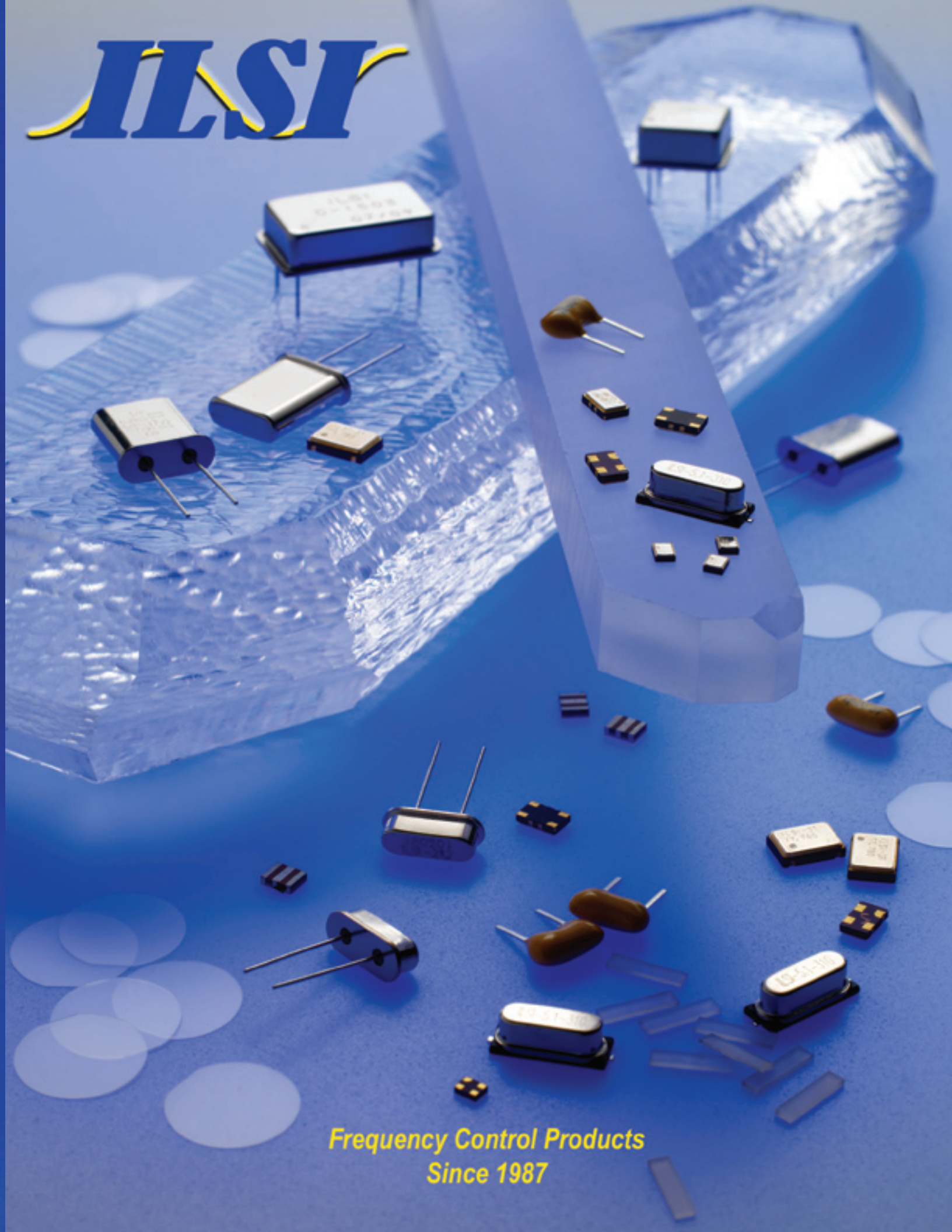


ILSI

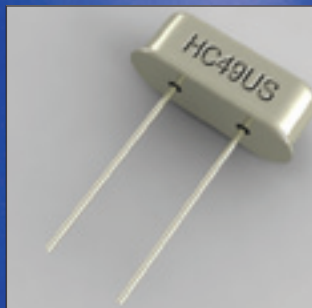


*Frequency Control Products
Since 1987*

CRYSTALS AND RESONATORS

CRYSTAL SMD MODELS

Series	Size (mm)	Height (mm)	Lowest Frequency	Highest Frequency
HC49USM	4.7 X 13.3	3.1/3.5/4.5	3.2 MHz	100 MHz
HC49USM4	4.8 X 12.5	4.5/5.2	3.2 MHz	100 MHz
IL3M	3.8 X 8	2.5	32.768 KHz	Only
IL3R	1.4 X 7	2.5	32.768 KHz	Only
IL3S	4.6 X 12.5	3.7	3.5 MHz	35 MHz
IL3X	1.5 X 3.2	0.9	32.768 KHz	Only
IL3Y	1.5 X 4.1	0.9	32.768 KHz	Only
ILCX03	3.2 X 5	1.3	10 MHz	100 MHz
ILCX04	5 X 7	1.3	6 MHz	100 MHz
ILCX05	5.5 X 11.9	2.5	3.5 MHz	70 MHz
ILCX07	3.2 X 5	1.3	10 MHz	100 MHz
ILCX08	3.5 X 6	1.1	8 MHz	100 MHz
ILCX09	3.5 X 6	1.1	8 MHz	100 MHz
ILCX10	5 X 7	1.3	6 MHz	100 MHz
ILCX13	2.5 X 3.2	0.9	12 MHz	100 MHz
ILCX18	2 X 2.5	0.55	20 MHz	60 MHz
ILCX19	1.6 X 2	0.45	26 MHz	60 MHz



CERAMIC RESONATOR SMD

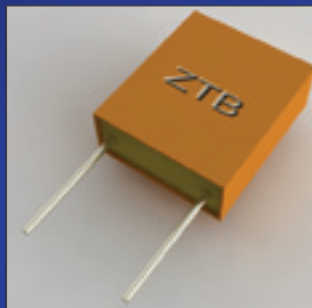
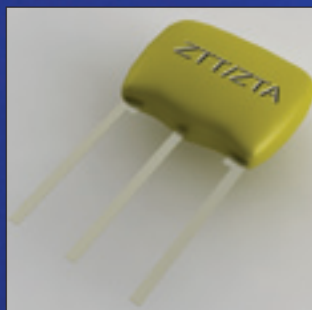
Series	Size (mm)	Height (mm)	Lowest Frequency	Highest Frequency
ZTTS ZTAS	See Data Sheet	1.6 or 1.8	1.8 MHz	50 MHz
ZTACV ZTACV	3.1 X 3.7	1.2	7 MHz	50 MHz

CERAMIC RESONATOR LEADED

ZTA ZTT	5.5 X 10	7.5 or 10	1.8 MHz	50 MHz
ZTB	See Data Sheet	6.8 to 14.7	190 KHz	1.6 MHz

CRYSTAL LEADED MODELS

Series	Size (mm)	Height (mm)	Lowest Frequency	Highest Frequency
HC49U	4.7 X 13.46	13.46	1.3 MHz	160 MHz
HC49US	4.7 X 11.1	2 to 3.5	3.2 MHz	100 MHz
UM-1/UM-4 UM-5	3.2 X 8	8.6 to 12.5	7 MHz	160 MHz
38 / 26 / 15	5 to 8	1.4 to 3	30 KHz	192 KHz
39	3 X 9	3	3 MHz	100 MHz



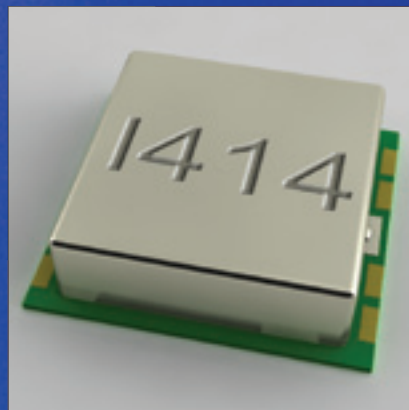
TCXO / TCVCXO SMD MODELS

Series	Size (mm)	Height (mm)	Lowest Frequency	Highest Frequency	Supply VDC	Output Type	Comments
I521 / I522 I721 / I722	11 X 18	4.7	1 MHz	40 MHz	3.3V 5V	TTL, HCMOS, LVHCMOS, Clipped Sine	Available Voltage Control
I523 / I524 I723 / I724	9 X 11	3.5	1 MHz	40 MHz	3.3V 5V	TTL, HCMOS, LVHCMOS, Clipped Sine	Available Voltage Control
I525 / I526 I725 / I726	9 X 11	3.8	1 MHz	40 MHz	3.3V 5V	TTL, HCMOS, LVHCMOS, Clipped Sine	Available Voltage Control
I531 / I731	5 X 7	1.9	10 MHz	27 MHz	2.7V 3.0V 3.3V	Clipped Sine	Available Voltage Control
I533 / I733	3.2 X 5	1.5	8 MHz	30 MHz	2.7V 3.0V 3.3V	LVHCMOS, Clipped Sine	Available Voltage Control
I537 / I737	2.5 X 3.2	1.2	8 MHz	30 MHz	2.7V 3.0V 3.3V	LVHCMOS, Clipped Sine	Available Voltage Control
I547 / I747 (GPS Version)	2.5 X 3.2	1.2	16.3676 MHz	26 MHz	2.7V 3.0V 3.3V	Clipped Sine	Available Voltage Control

TCXO / TCVCXO LEADED MODELS

I121 / I122 I321 / I322	DIP	5.8	1 MHz	40 MHz	3.3V 5V	TTL, HCMOS, Clipped Sine	Available Voltage Control
I123 / I124 I323 / I324	DIP	9	1 MHz	40 MHz	3.3V 5V	TTL, HCMOS, Clipped Sine	Available Voltage Control





VCXO SMD MODELS

Series	Size (mm)	Height (mm)	Lowest Frequency	Highest Frequency	Supply VDC	Output Type	Comments
I605	5 X 7	2	1 MHz	170 MHz	3.3V 5V	TTL HCMOS LVHCMOS	
I606	9 X 14	6	1 MHz	180 MHz	3.3V	LVPECL LVDS	Low Noise
I616	9 X 14	6	180 MHz	750 MHz	3.3V	LVPECL LVDS	PLL
I607	5 X 7	2	1 MHz	77.76 MHz	3.3V	LVPECL LVDS	Low Noise
I617	5 X 7	2	77.76 MHz	622.08 MHz	3.3V	LVPECL LVDS	PLL

VCXO LEADED MODELS

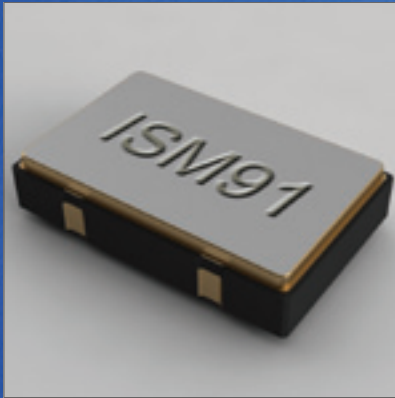
I202	DIP and Half DIP	6	1 MHz	51.84 MHz	3.3V 5V	TTL HCMOS LVHCMOS	Low Noise
I212 / I213	DIP and Half DIP	6	51.84 MHz	170 MHz	3.3V 5V	TTL HCMOS LVHCMOS	PLL

OCXO SMD MODELS

Series	Size (mm)	Height (mm)	Lowest Frequency	Highest Frequency	Supply VDC	Output Type	Comments
I414	25.4 X 22.1	12	10 MHz	20 MHz	3.3V	TTL, HCMOS, Sine Wave	

OCXO LEADED MODELS

I401	DIP	10	1 MHz	50 MHz	3.3V 5V 12V	TTL, HCMOS, Sine Wave	
I405	27 X 36 (Euro)	19.5	1 MHz	150 MHz	3.3V 5V 12V	TTL, HCMOS, Sine Wave	
I408	26 X 26	13.5	1 MHz	150 MHz	3.3V 5V 12V	TTL, HCMOS, Sine Wave	
I411	20.5 X 20.5	10.5	1 MHz	150 MHz	3.3V 5V	HCMOS, Sine Wave	



OSCILLATOR SMD MODELS

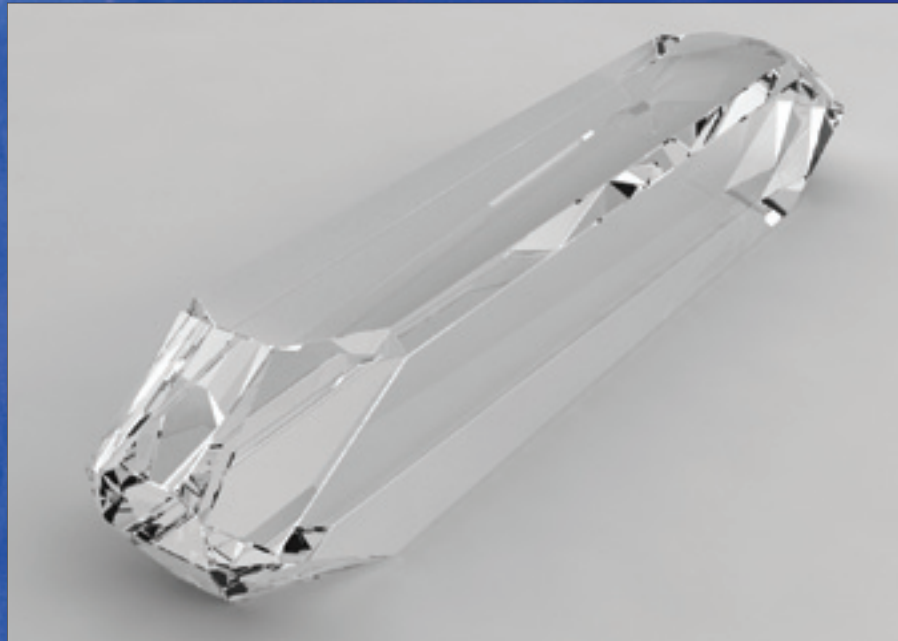
Series	Size (mm)	Height (mm)	Lowest Frequency	Highest Frequency	Supply VDC	Output Type	Comments
ISM61	9 X 14	4.7	250 KHz	150 MHz	3.3V 5V	CMOS	
ISM65	9 X 14	6	1 MHz	180 MHz	2.5V, 2.7V 3.0V, 3.3V	LVPECL LVDS	Low Noise
ISM66	9 X 14	6	50 MHz	750 MHz	2.5V, 2.7V 3.0V, 3.3V	LVPECL LVDS	PLL
ISM68	9 X 14	4.7	1 MHz	180 MHz	2.5V, 2.7V 3.0V, 3.3V	LVPECL LVDS	Low Noise
ISM69	9 X 14	4.7	180 MHz	622.08 MHz	2.5V, 2.7V 3.0V, 3.3V	LVPECL LVDS	PLL
ISM88	3.2 X 5	1.4	25 MHz	350 MHz	2.5V 3.3V	LPECL	
ISM89	3.2 X 5	1.4	80 MHz	250 MHz	2.5V 3.3V	LVDS	
ISM91	5 X 7	1.6	1 MHz	170 MHz	1.8V, 2.5V 2.7V, 3.0V, 5V	TTL, HCMOS, LVHCMOS	Low Noise
ISM92	3.2 X 5	1.6	1.5 MHz	80 MHz	1.8V, 2.5V 2.7V, 3.0V, 5V	TTL, HCMOS, LVHCMOS	
ISM95	2 X 2.5	0.8	1 MHz	60 MHz	1.8V, 2.5V 2.7V, 3.0V, 5V	TTL, HCMOS, LVHCMOS	
ISM97	2.5 X 3.2	1.2	1 MHz	60 MHz	1.8V, 2.5V 2.7V, 3.0V, 5V	TTL, HCMOS, LVHCMOS	
ISM98	5 X 7	1.8	1 MHz	180 MHz	1.8V, 2.5V 2.7V, 3.0V, 3.3V	LVPECL LVDS	Low Noise
ISM99	5 X 7	1.8	1 MHz	622.08 MHz	1.8V, 2.5V 2.7V, 3.0V, 3.3V	LVPECL LVDS	PLL

OSCILLATOR LEADED MODELS

Series	Size (mm)	Height (mm)	Lowest Frequency	Highest Frequency	Supply VDC	Output Type	Comments
HCOF / HCOH	DIP and Half DIP	5.1	1 MHz	160 MHz	3.3V 5V	TTL HCMOS LVHCMOS	



Founded in 1987, ILSI is a leader in providing frequency control solutions to our customers around the world.



WORLDWIDE LOCATIONS:

**Reno
Beijing
Hong Kong
Seoul**

HEADQUARTERS:

ILSI America LLC

5458 Louie Lane • Reno, NV 89511
Phone 775.851.8880 • Fax 775.851.8882

email: e-mail@ilsiamerica.com
www.ilsiamerica.com

Proudly represented by: